

Butt Weld Pipe

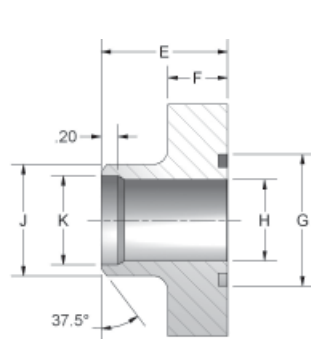
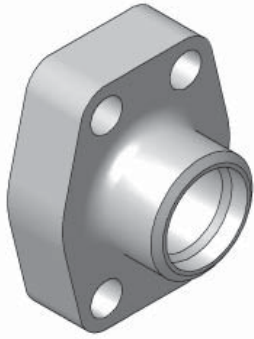


Figure 1

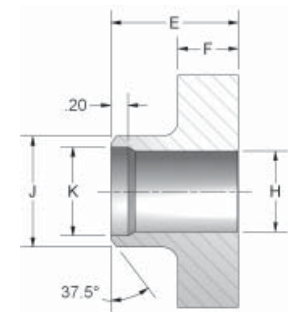
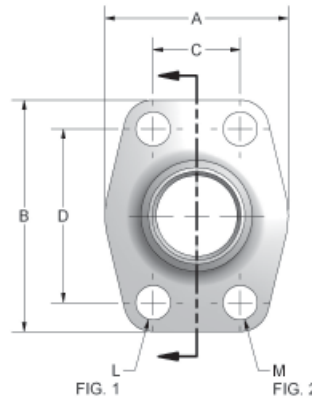


Figure 2

FLOW, NEEDLE & CHECK VALVES

HYDRAULIC BALL VALVES

WELD COUPLINGS

FLANGES

CODE 61 BUTT WELD - SCHEDULE 40 PIPE

| PART NO. O-RING FIG. 1 | PART NO. FLAT FACE FIG. 2 | PIPE SIZE | PAD SIZE | A | B | C | D | E | F | G | H | J | K | L | M UNC-2B | MOUNTING HARDWARE | |
|------------------------|---------------------------|-----------|----------|------|------|-------|-------|------|------|-------|-------|-------|-------|------|----------|-------------------|--------------|
| | | | | | | | | | | | | | | | | O-RING | SHCS |
| W35-8 | W34-8 | .50 | .50 | 1.81 | 2.13 | .688 | 1.500 | 1.42 | .63 | 1.000 | .548 | .840 | .624 | .344 | 5/16-18 | 210 | 5/16-18X1.25 |
| W35-12 | W34-12 | .75 | .75 | 1.97 | 2.56 | .875 | 1.875 | 1.42 | .71 | 1.250 | .744 | 1.050 | .846 | .406 | 3/8-16 | 214 | 3/8-16X1.50 |
| W35-16 | W34-16 | 1.00 | 1.00 | 2.17 | 2.75 | 1.031 | 2.062 | 1.50 | .71 | 1.560 | .959 | 1.315 | 1.051 | .406 | 3/8-16 | 219 | 3/8-16X1.50 |
| W35-20 | W34-20 | 1.25 | 1.25 | 2.68 | 3.12 | 1.188 | 2.312 | 1.61 | .83 | 1.750 | 1.280 | 1.660 | 1.382 | .469 | 7/16-14 | 222 | 7/16-14X1.75 |
| W35-24 | W34-24 | 1.50 | 1.50 | 3.07 | 3.66 | 1.406 | 2.750 | 1.73 | .98 | 2.115 | 1.502 | 1.900 | 1.612 | .531 | 1/2-13 | 225 | 1/2-13X1.75 |
| W35-32 | W34-32 | 2.00 | 2.00 | 3.54 | 4.00 | 1.688 | 3.062 | 1.77 | .98 | 2.490 | 1.941 | 2.375 | 2.069 | .531 | 1/2-13 | 228 | 1/2-13X1.75 |
| W35-40 | W34-40 | 2.50 | 2.50 | 4.09 | 4.49 | 2.000 | 3.500 | 1.97 | .98 | 2.995 | 2.325 | 2.875 | 2.471 | .531 | 1/2-13 | 232 | 1/2-13X1.75 |
| W35-48 | W34-48 | 3.00 | 3.00 | 4.88 | 5.28 | 2.438 | 4.188 | 1.97 | 1.06 | 3.615 | 2.902 | 3.500 | 3.070 | .656 | 5/8-11 | 237 | 5/8-11X2.00 |

CODE 61 BUTT WELD - SCHEDULE 80 PIPE

| PART NO. O-RING FIG. 1 | PART NO. FLAT FACE FIG. 2 | PIPE SIZE | PAD SIZE | A | B | C | D | E | F | G | H | J | K | L | M UNC-2B | MOUNTING HARDWARE | |
|------------------------|---------------------------|-----------|----------|------|------|-------|-------|------|------|-------|-------|-------|------------------|------|----------|-------------------|--------------|
| | | | | | | | | | | | | | | | | O-RING | SHCS |
| W24-8 | W23-8 | .50 | .50 | 1.81 | 2.13 | .688 | 1.500 | 1.42 | .63 | 1.000 | .548 | .840 | SCHEDULE 40 ONLY | .344 | 5/16-18 | 210 | 5/16-18X1.25 |
| W24-12 | W23-12 | .75 | .75 | 1.97 | 2.56 | .875 | 1.875 | 1.42 | .71 | 1.250 | .744 | 1.050 | | .406 | 3/8-16 | 214 | 3/8-16X1.50 |
| W24-16 | W23-16 | 1.00 | 1.00 | 2.17 | 2.75 | 1.031 | 2.062 | 1.50 | .71 | 1.560 | .959 | 1.315 | | .406 | 3/8-16 | 219 | 3/8-16X1.50 |
| W24-20 | W23-20 | 1.25 | 1.25 | 2.68 | 3.12 | 1.188 | 2.312 | 1.61 | .83 | 1.750 | 1.280 | 1.660 | | .469 | 7/16-14 | 222 | 7/16-14X1.75 |
| W24-24 | W23-24 | 1.50 | 1.50 | 3.07 | 3.66 | 1.406 | 2.750 | 1.73 | .98 | 2.115 | 1.502 | 1.900 | | .531 | 1/2-13 | 225 | 1/2-13X1.75 |
| W24-32 | W23-32 | 2.00 | 2.00 | 3.54 | 4.00 | 1.688 | 3.062 | 1.77 | .98 | 2.490 | 1.941 | 2.375 | | .531 | 1/2-13 | 228 | 1/2-13X1.75 |
| W24-40 | W23-40 | 2.50 | 2.50 | 4.09 | 4.49 | 2.000 | 3.500 | 1.97 | .98 | 2.995 | 2.325 | 2.875 | | .531 | 1/2-13 | 232 | 1/2-13X1.75 |
| W24-48 | W23-48 | 3.00 | 3.00 | 4.88 | 5.28 | 2.438 | 4.188 | 1.97 | 1.06 | 3.615 | 2.902 | 3.500 | | .656 | 5/8-11 | 237 | 5/8-11X2.00 |

CODE 61 BUTT WELD - SCHEDULE 160 PIPE

| PART NO. O-RING FIG. 1 | PART NO. FLAT FACE FIG. 2 | PIPE SIZE | PAD SIZE | A | B | C | D | E | F | G | H | J | K | L | M UNC-2B | MOUNTING HARDWARE | |
|------------------------|---------------------------|-----------|----------|------|------|-------|-------|------|------|-------|-------|-------|------------------|------|----------|-------------------|--------------|
| | | | | | | | | | | | | | | | | O-RING | SHCS |
| W27-8 | W25-8 | .50 | .50 | 1.81 | 2.13 | .688 | 1.500 | 1.42 | .63 | 1.000 | .466 | .840 | SCHEDULE 40 ONLY | .344 | 5/16-18 | 210 | 5/16-18X1.25 |
| W27-12 | W25-12 | .75 | .75 | 1.97 | 2.56 | .875 | 1.875 | 1.42 | .71 | 1.250 | .614 | 1.050 | | .406 | 3/8-16 | 214 | 3/8-16X1.50 |
| W27-16 | W25-16 | 1.00 | 1.00 | 2.17 | 2.75 | 1.031 | 2.062 | 1.50 | .71 | 1.560 | .817 | 1.315 | | .406 | 3/8-16 | 219 | 3/8-16X1.50 |
| W27-20 | W25-20 | 1.25 | 1.25 | 2.68 | 3.12 | 1.188 | 2.132 | 1.61 | .83 | 1.750 | 1.162 | 1.660 | | .469 | 7/16-14 | 222 | 7/16-14X1.75 |
| W27-24 | W25-24 | 1.50 | 1.50 | 3.07 | 3.66 | 1.406 | 2.750 | 1.73 | .98 | 2.115 | 1.340 | 1.900 | | .531 | 1/2-13 | 225 | 1/2-13X1.75 |
| W27-32 | W25-32 | 2.00 | 2.00 | 3.54 | 4.00 | 1.688 | 3.062 | 1.77 | .98 | 2.490 | 1.689 | 2.375 | | .531 | 1/2-13 | 228 | 1/2-13X1.75 |
| W27-40 | W25-40 | 2.50 | 2.50 | 4.09 | 4.49 | 2.000 | 3.500 | 1.97 | .98 | 2.995 | 2.127 | 2.875 | | .531 | 1/2-13 | 232 | 1/2-13X1.75 |
| W27-48 | W25-48 | 3.00 | 3.00 | 4.88 | 5.28 | 2.438 | 4.188 | 1.97 | 1.06 | 3.615 | 2.626 | 3.500 | | .656 | 5/8-11 | 237 | 5/8-11X2.00 |

*NOTE: Also available in sizes 3 1/2", 4", and 5". Consult factory for specifications.